

The IMC series hydraulic motor inherits the IMB series hydrostatic balance motor structure, high efficiency, high starting torque, high volumetric efficiency, etc.

The IMC series two-speed hydraulic motor enables users to select the required displacement for a wide range of special working conditions. Users can switch the displacement by using a remote control or by manual control using the control valve mounted on the motors. The displacement can easily be changed while the motor is still running.

Its main characteristics are as follows:

- two-speed, so when the pump flow is constant, the motor has two-speed.
- Low speed & High-torque
- High Efficiency
- Stable Running
- Wide range of Displacement
- Switchable Displacement while the motor is running
- Switch realized with electro hydraulic or mechanical control

Main Application:

capstan, hoist, windless machinery, hydraulic drive for automobiles, etc,

Ordering Code

	****	-	***	-	***	-	***	-	***	-	***	-
	1		2		3		4		5		6	
1) IMC model of dual speed motor	_____		_____		_____		_____		_____		_____	
2) Type	_____		_____		_____		_____		_____		_____	
3) Large Displacement	_____		_____		_____		_____		_____		_____	
4) Small Displacement	_____		_____		_____		_____		_____		_____	
5) Output Shaft	_____		_____		_____		_____		_____		_____	
a. P-Parallel keyed shaft (numbers stand for the kinds of shaft)												
b. T-Taper key shaft												
c. S-Spline Shaft (1 stand for BS3550 standard shaft, 2 stand for DIN5480)												
d. Q-Internal Spline Shaft												
6) Variable Control	_____		_____		_____		_____		_____		_____	
Null Control Valve												
Electromagnetic Control Valve												
Manual Control Valve												

Example

IMC	200	2900	1500	S1	L1A-**
two-speed motor					IMC
type					200
large displacement					2900ml/r
small displacement					1500ml/r
shaft					S1
variable control					L1A null control valve

名义排量 NOMINAL DISPLACEMENT	1600	1500	1400	1300	1200	1100	1000	900	800	700	600	500	400	300	200	100
排量 ml/r DISPLACEMENT	1580	1481	1383	1284	1185	1086	987	889	790	691	592	494	395	296	197	98/0
单位扭矩 N.M/Mpa SPECIFIC TORQUE	225	212	198	184	169	155	140	125	108	94	78	68	45	30	18	0
最大持续转速 r/min MAX. CONT. SPEED	260	270	280	300	330	370	405	485	540	540	540	540	540	540	540	900
最大持续功率 KW MAX. CONT. POWER	99	98	96	93	90	84	82	79	74	69	57	46	35	23	10	0
最大断续功率 KM MAX. CONT. POWER	120	117	113	109	105	100	97	93	87	81	68	54	40	28	14	0
最大持续压力 Mpa MAX. CONT. PRESSURE	21	21	21	21	21	21	21	21	21	21	21	21	21	21	21	15
最大断续压力 Mpa MAX. TOP. PRESSURE	25	25	25	25	25	25	25	25	25	25	25	25	25	25	25	15

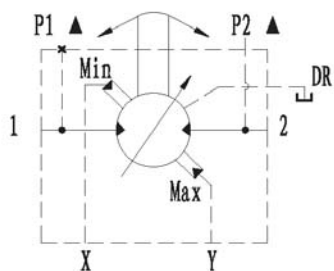
IMC100排量的选择范围 IMC100 Displacement Options

大排量 Large displacement: 1600, 1500, 1400, 1300, 1200, 1100, 1000, 900, 800;

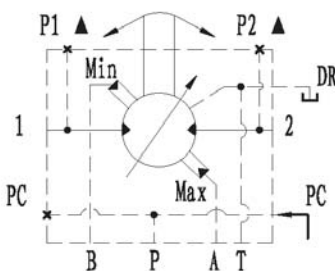
小排量 Small displacement: 1100, 1000, 800, 700, 600, 500, 400, 300, 200, 100

控制原理图 Functional Symbols

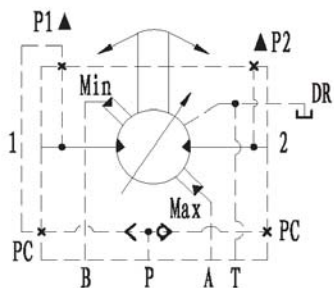
-L1A-



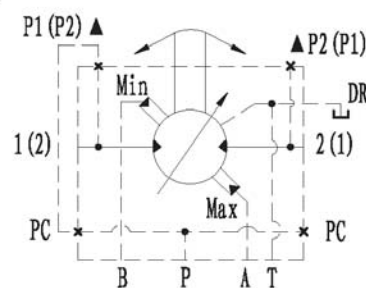
-L1B-



-L1C-

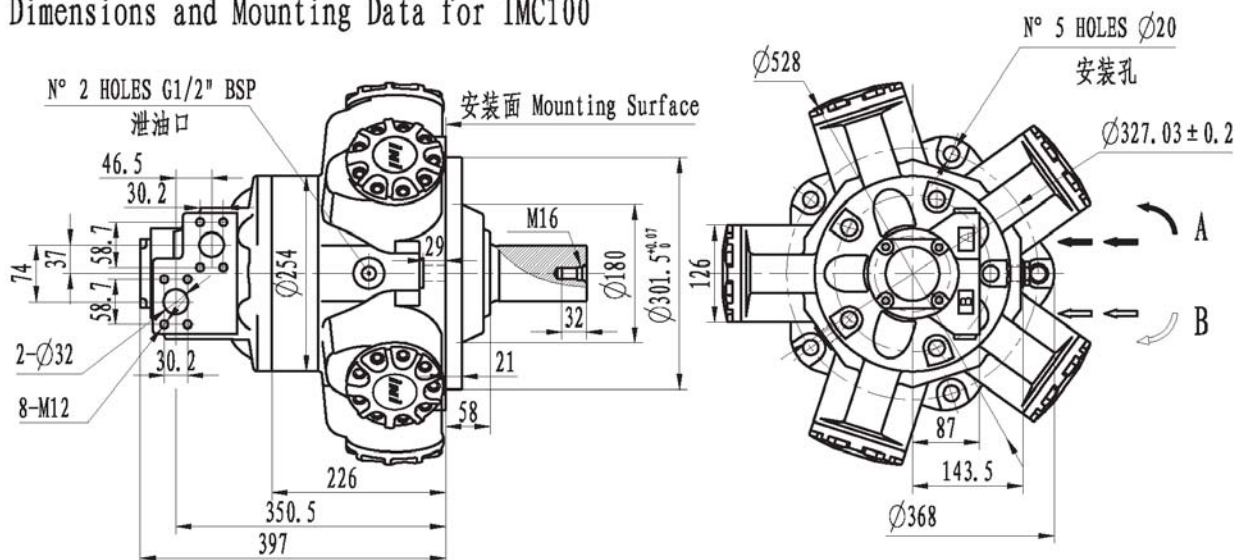


-L1D-



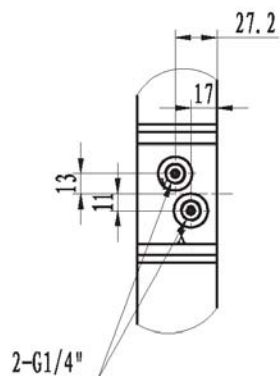
IMC100系列安装联接尺寸图

Dimensions and Mounting Data for IMC100

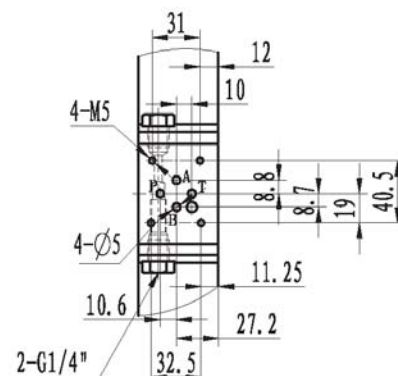


变量控制方法的安装尺寸 Variable Control's Mounting Data

L1A 的安装尺寸 L1A Mounting Data



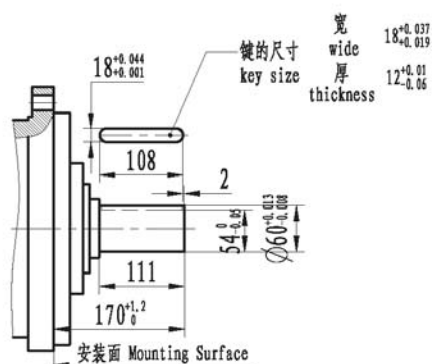
L1B&L1C&L1D 的安装尺寸 L1B&L1C&L1D Mounting Data



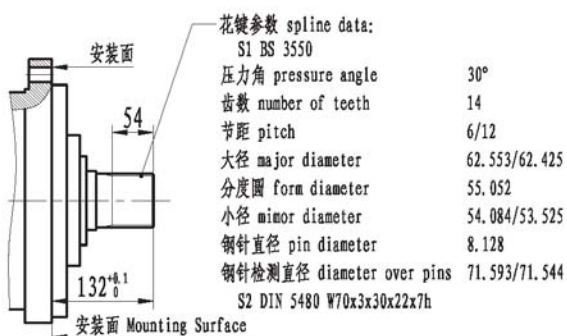
输出轴样式

SHAFTS

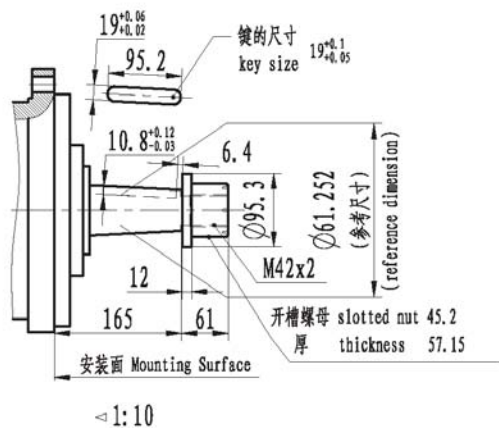
IMC100-P2



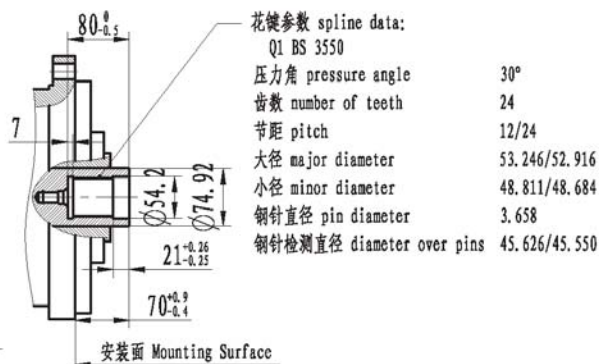
IMC100-S1&S2



IMC100-T1



IMC100-Q1



名义排量 NOMINAL DISPLACEMENT	2100	2000	1800	1600	1500	1300	1200	1000	830	670	510	350	190	110
排量 ml/r DISPLACEMENT	2066	1973	1811	1649	1487	1325	1163	1001	839	677	515	353	191	109/0
单位扭矩 N·M/Mpa SPECIFIC TORQUE	293	281	258	231	206	180	154	125	100	79	57	39	6	0
最大持续转速 r/min MAX. CONT. SPEED	170	175	190	210	230	265	305	350	395	485	540	540	540	900
最大持续功率 KW MAX. CONT. POWER	91	89	83	77	71	66	60	55	48	42	33	16	3	0
最大断续功率 KM MAX. CONT. POWER	106	104	99	95	90	85	79	73	65	57	44	28	5	0
最大持续压力 Mpa MAX. CONT. PRESSURE	21	21	21	21	21	21	21	21	21	21	21	21	21	15
最大断续压力 Mpa MAX. TOP. PRESSURE	25	25	25	25	25	25	25	25	25	25	25	25	25	15

IMC125排量的选择范围 IMC125 Displacement Options

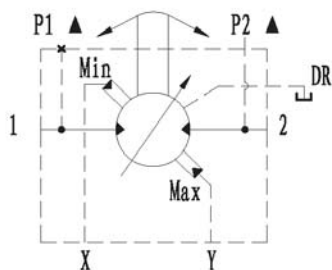
大排量 Large Displacement: 2100, 2000, 1800, 1600

小排量 Small Displacement: 1600, 1500, 1300, 1200, 1000, 830, 670, 510, 350, 190, 110

控制原理图 Functional Symbols

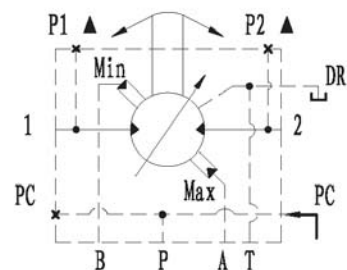
-F01-L1A-

-F02-L1A-



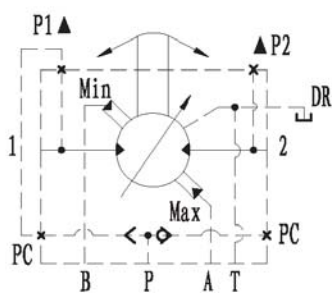
-F01-L1B-

-F02-L1B-



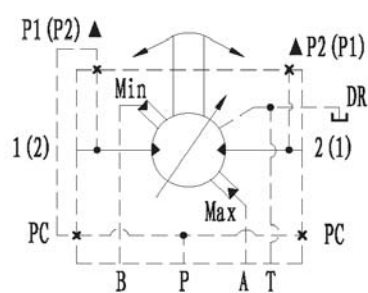
-F01-L1C-

-F02-L1C-



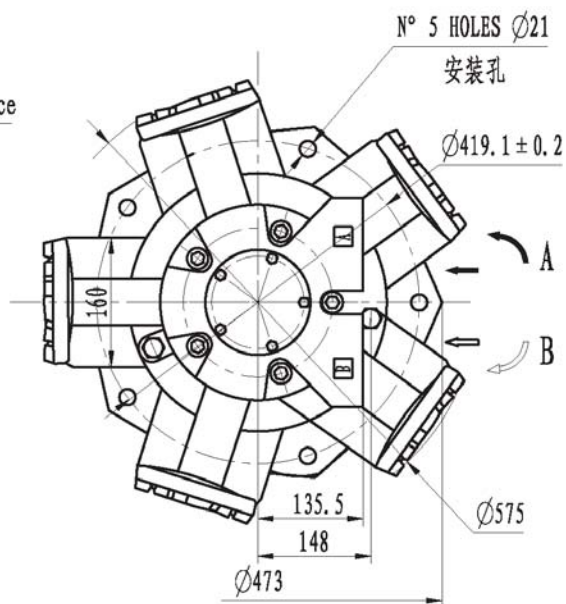
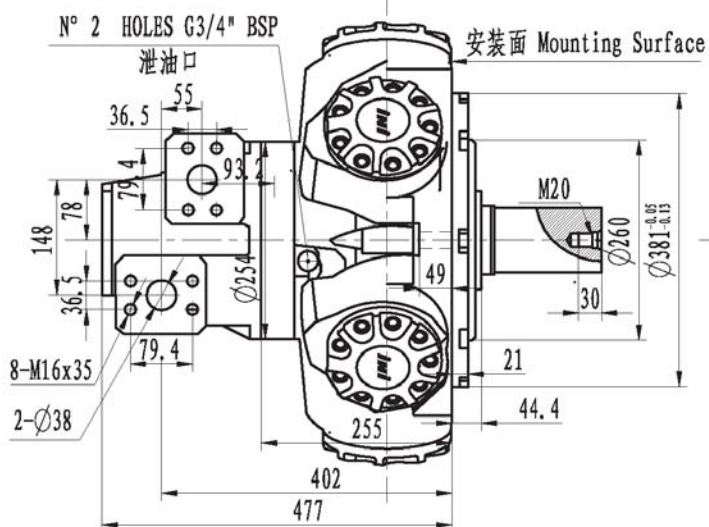
-F01-L1D-

-F02-L1D-



IMC125系列安装联接尺寸图

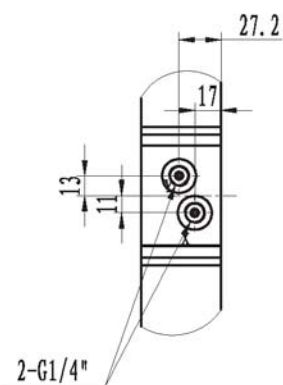
Dimensions and Mounting Data for IMC125



变量控制方法的安装尺寸 Variable Control's Mounting Data

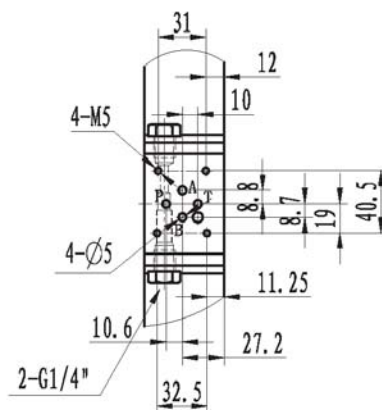
L1A 的安装尺寸

L1A Munting Data



L1B&L1C&L1D 的安装尺寸

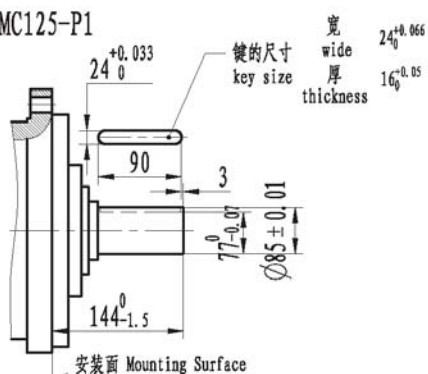
L1B&L1C&L1D Mounting Data



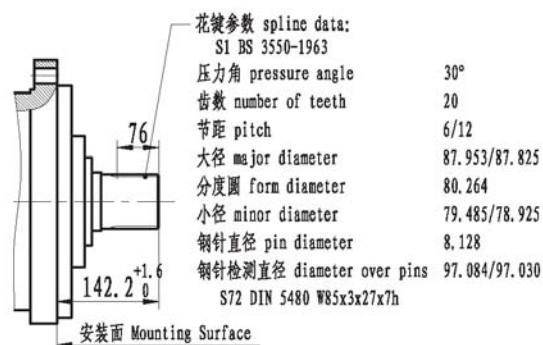
输出轴形式

SHAFTS

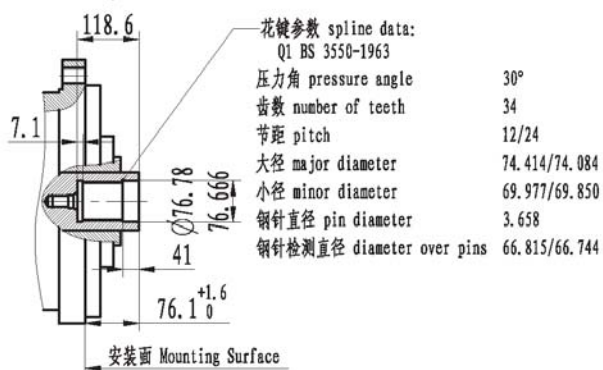
IMC125-P1



IMC125-S1&S2



IMC125-Q1



名义排量 NOMINAL DISPLACEMENT	3100	2900	2800	2600	2400	2300	2100	2000	1800	1600	1500	1300	1200	1000	830	670	510	350	190	110
排量 ml/r DISPLACEMENT	3080	2958	2796	2634	2472	2310	2148	1973	1811	1649	1487	1325	1163	1001	839	677	515	353	191	109/0
单位扭矩 N.M/Mpa SPECIFIC TORQUE	447	422	400	375	351	326	300	281	258	231	206	180	154	125	100	79	57	30	6	0
最大持续转速 r/min MAX. CONT. SPEED	110	115	125	135	140	150	160	175	190	210	230	265	305	350	395	485	540	540	540	900
最大持续功率 KW MAX. CONT. POWER	131	131	131	124	117	111	96	89	83	77	71	66	60	55	48	42	33	16	3	0
最大断续功率 KM MAX. CONT. POWER	146	146	146	139	131	124	116	104	99	95	90	85	79	73	65	57	44	28	5	0
最大持续压力 Mpa MAX. CONT. PRESSURE	21	21	21	21	21	21	21	21	21	21	21	21	21	21	21	21	21	21	21	15
最大断续压力 Mpa MAX. TOP. PRESSURE	25	25	25	25	25	25	25	25	25	25	25	25	25	25	25	25	25	25	25	15

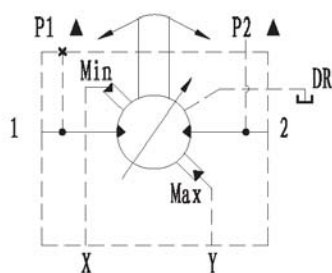
IMC200排量的选择范围 IMC200 Displacement Options

大排量 Large Displacement: 3100, 2900, 2800, 2600, 2400, 2300, 2100, 2000, 1800, 1600

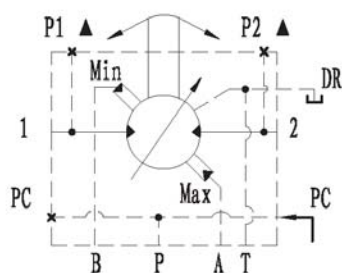
小排量 Small Displacement: 2300, 2100, 2000, 1800, 1600, 1500, 1300, 1200, 1000, 830, 670, 510, 350, 190, 110

控制原理图 Functional Symbols

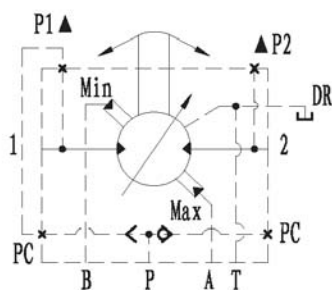
-L1A-



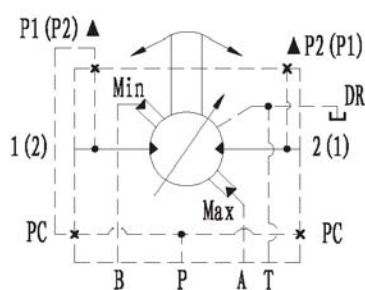
-L1B-



-L1C-

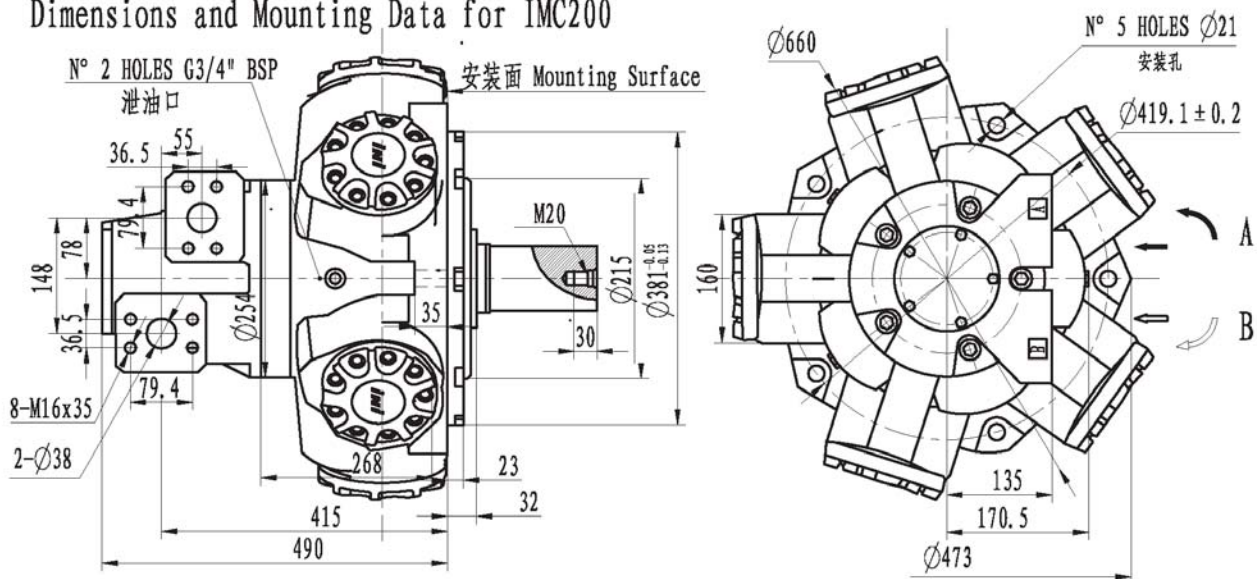


-L1D-



IMC200系列安装联接尺寸图

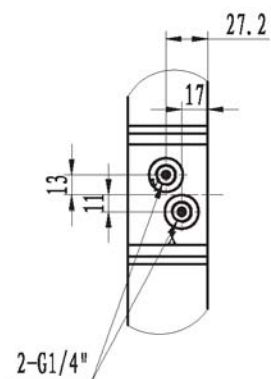
Dimensions and Mounting Data for IMC200



变量控制方法的安装尺寸 Variable Control's Mounting Data

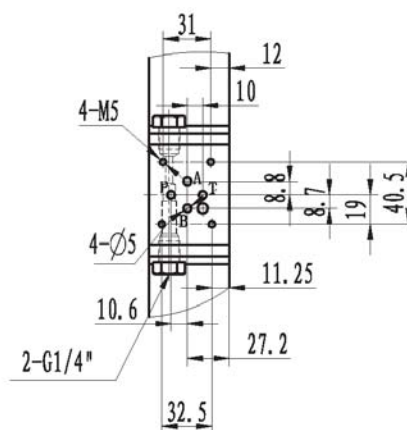
L1A 的安装尺寸

L1A Munting Data



L1B&L1C&L1D 的安装尺寸

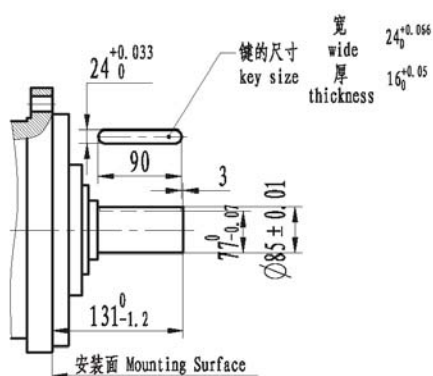
L1B&L1C&L1D Mounting Data



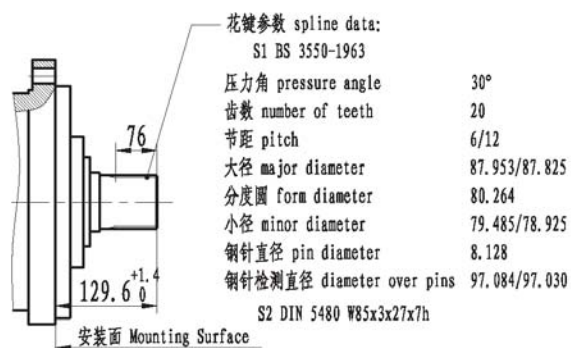
输出轴样式

SHAFTS

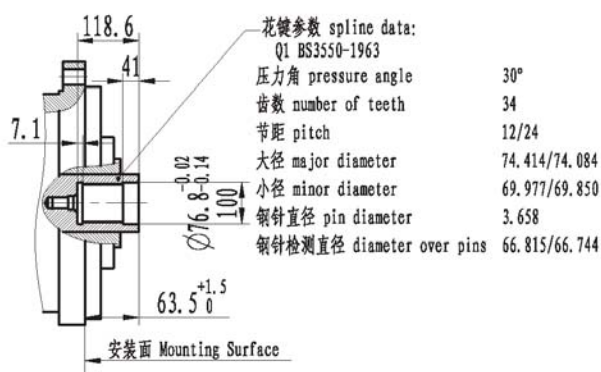
IMC200-P1



IMC200-S1&S2



IMC200-Q1



名义排量 NOMINAL DISPLACEMENT	4600	4100	3600	3300	3000	2600	2300	1900	1600	1400	970	680	340	170
排量 ml/r DISPLACEMENT	4597	4086	3632	3291	2951	2610	2270	1930	1649	1362	965	681	340	170/0
单位扭矩 N.M/Mpa SPECIFIC TORQUE	657	585	514	460	419	356	310	259	210	168	108	73	24	0
最大持续转速 r/min MAX. CONT. SPEED	108	120	135	145	165	180	215	240	290	315	315	315	315	900
最大持续功率 KW MAX. CONT. POWER	123	115	104	97	90	83	76	68	59	48	37	25	8	0
最大断续功率 KM MAX. CONT. POWER	153	149	142	136	129	122	112	102	91	81	68	47	12	0
最大持续压力 Mpa MAX. CONT. PRESSURE	21	21	21	21	21	21	21	21	21	21	21	21	21	15
最大断续压力 Mpa MAX. TOP. PRESSURE	25	25	25	25	25	25	25	25	25	25	25	25	25	15

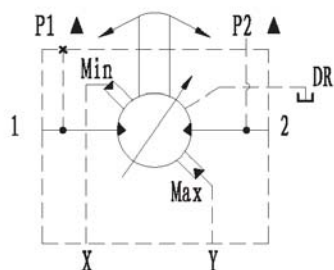
IMC270排量的选择范围 IMC270 Displacement Options

大排量 Large Displacement: 4600, 4100, 3600, 3300

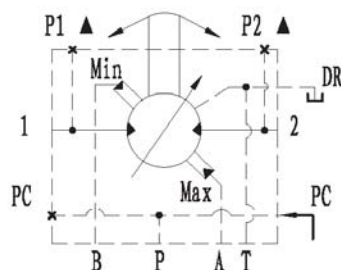
小排量 Small Displacement: 3300, 3000, 2600, 2300, 1900, 1600, 1400, 970, 680, 340, 170

控制原理图 Functional Symbols

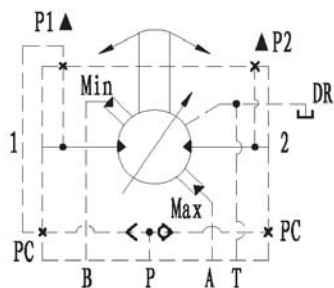
-L1A-



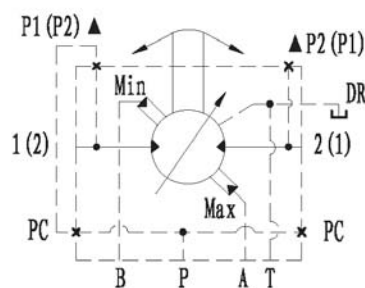
-L1B-



-L1C-

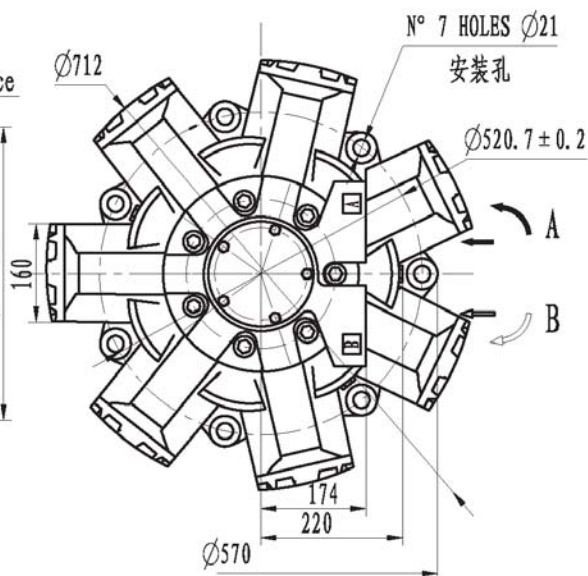
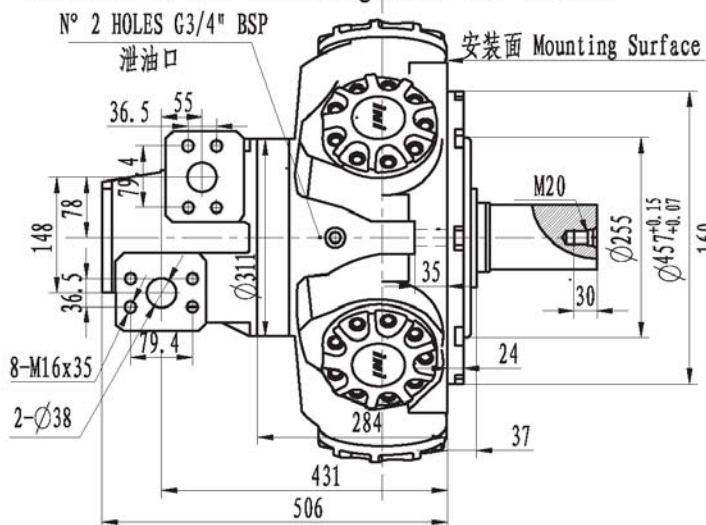


-L1D-



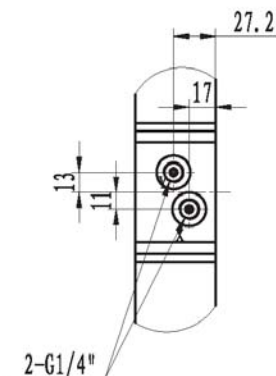
IMC270系列安装联接尺寸图

Dimensions and Mounting Data for IMC200

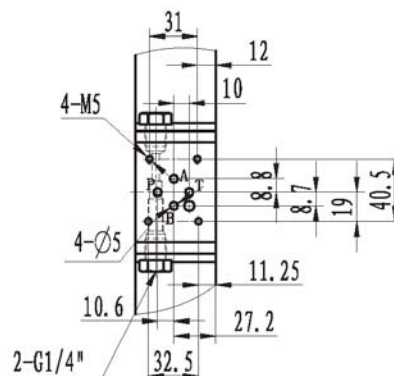


变量控制方法的安装尺寸 Variable Control's Mounting Data

L1A 的安装尺寸 L1A Munting Data



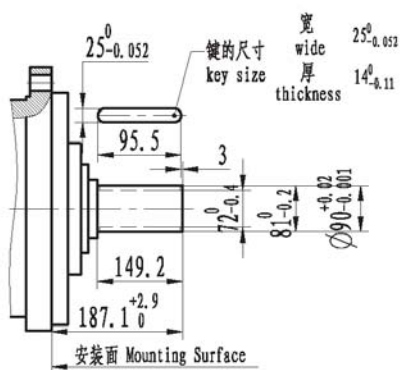
L1B&L1C&L1D 的安装尺寸 L1B&L1C&L1D Mounting Data



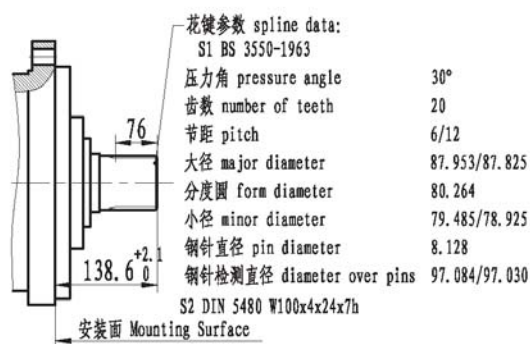
输出轴样式

SHAFTS

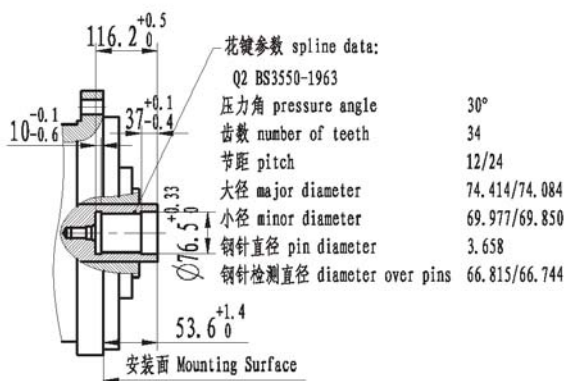
IMC270-P1



IMC270-S1&S2



IMC270-Q1



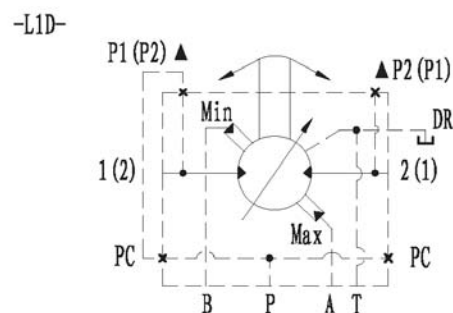
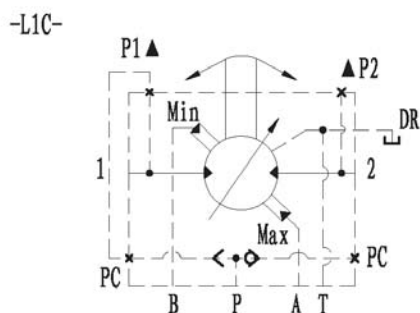
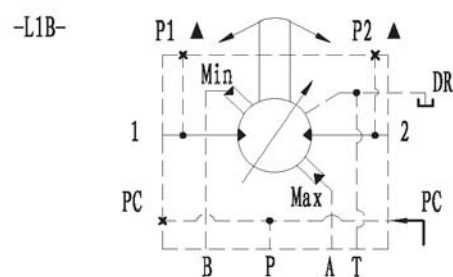
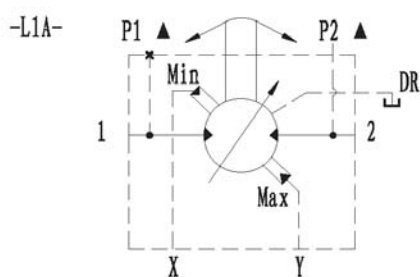
名义排量 NOMINAL DISPLACEMENT	5300	5100	4900	3600	3300	3000	2600	2300	1900	1600	1500	1400
排量 ml/r DISPLACEMENT	5335	5108	4937	3632	3291	2951	2610	2270	1930	1646	1532	1362
单位扭矩 N.M/Mpa SPECIFIC TORQUE	763	731	706	514	460	419	356	310	259	210	196	168
最大持续转速 r/min MAX. CONT. SPEED	90	105	110	135	145	165	180	215	240	290	315	315
最大持续功率 KW MAX. CONT. POWER	123	123	123	104	97	90	83	76	68	59	54	48
最大断续功率 KM MAX. CONT. POWER	153	153	153	142	136	129	122	112	102	91	87	81
最大持续压力 Mpa MAX. CONT. PRESSURE	21	21	21	21	21	21	21	21	21	21	21	15
最大断续压力 Mpa MAX. TOP. PRESSURE	25	25	25	25	25	25	25	25	25	25	25	15

IMC325排量的选择范围 IMC325 Displacement Options

大排量 Large Displacement: 5300, 5100, 4900;

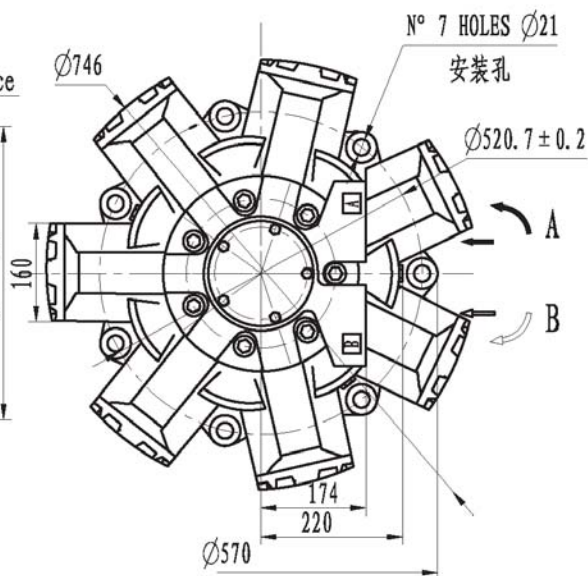
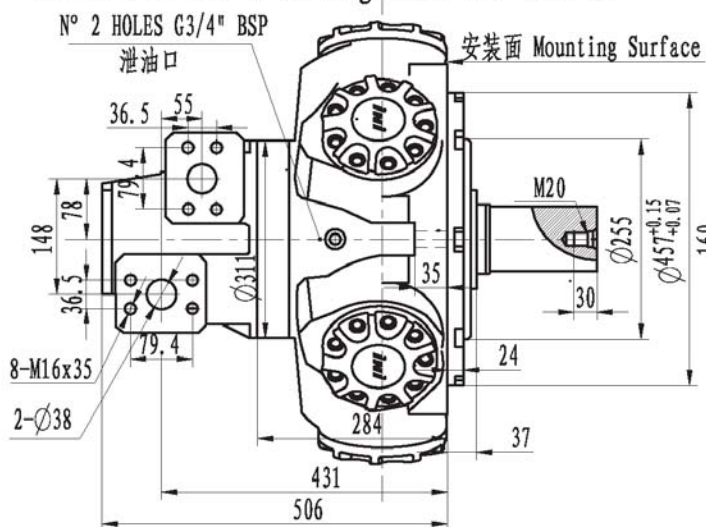
小排量 Small Displacement: 3600, 3300, 3000, 2600, 2300, 1900, 1600, 1500, 1400

控制原理图 Functional Symbols



IMC325系列安装联接尺寸图

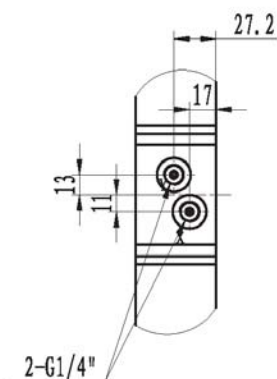
Dimensions and Mounting Data for IMC325



变量控制方法的安装尺寸 Variable Control's Mounting Data

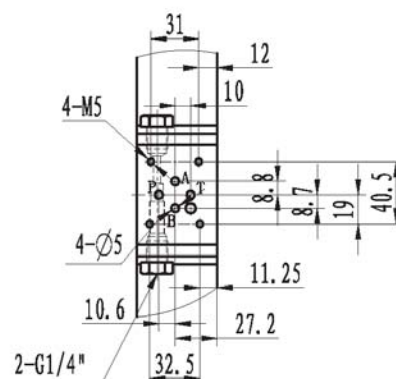
L1A 的安装尺寸

L1A Munting Data



L1B&L1C&L1D 的安装尺寸

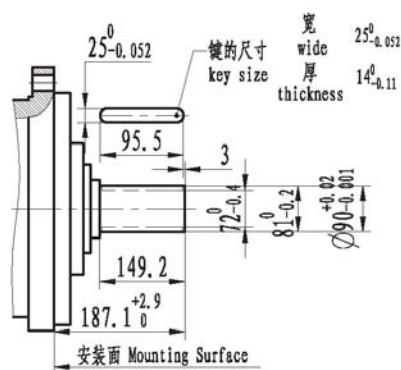
L1B&L1C&L1D Mounting Data



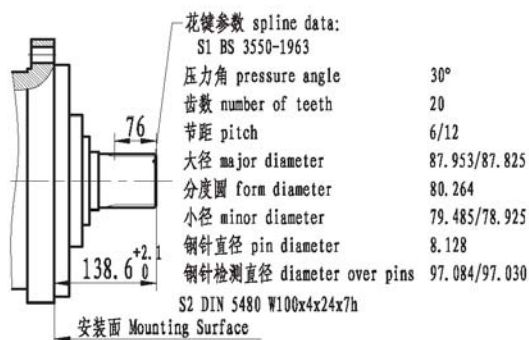
输出轴样式

SHAFTS

IMC325-P1



IMC325-S1&S2



IMC325-Q1

